

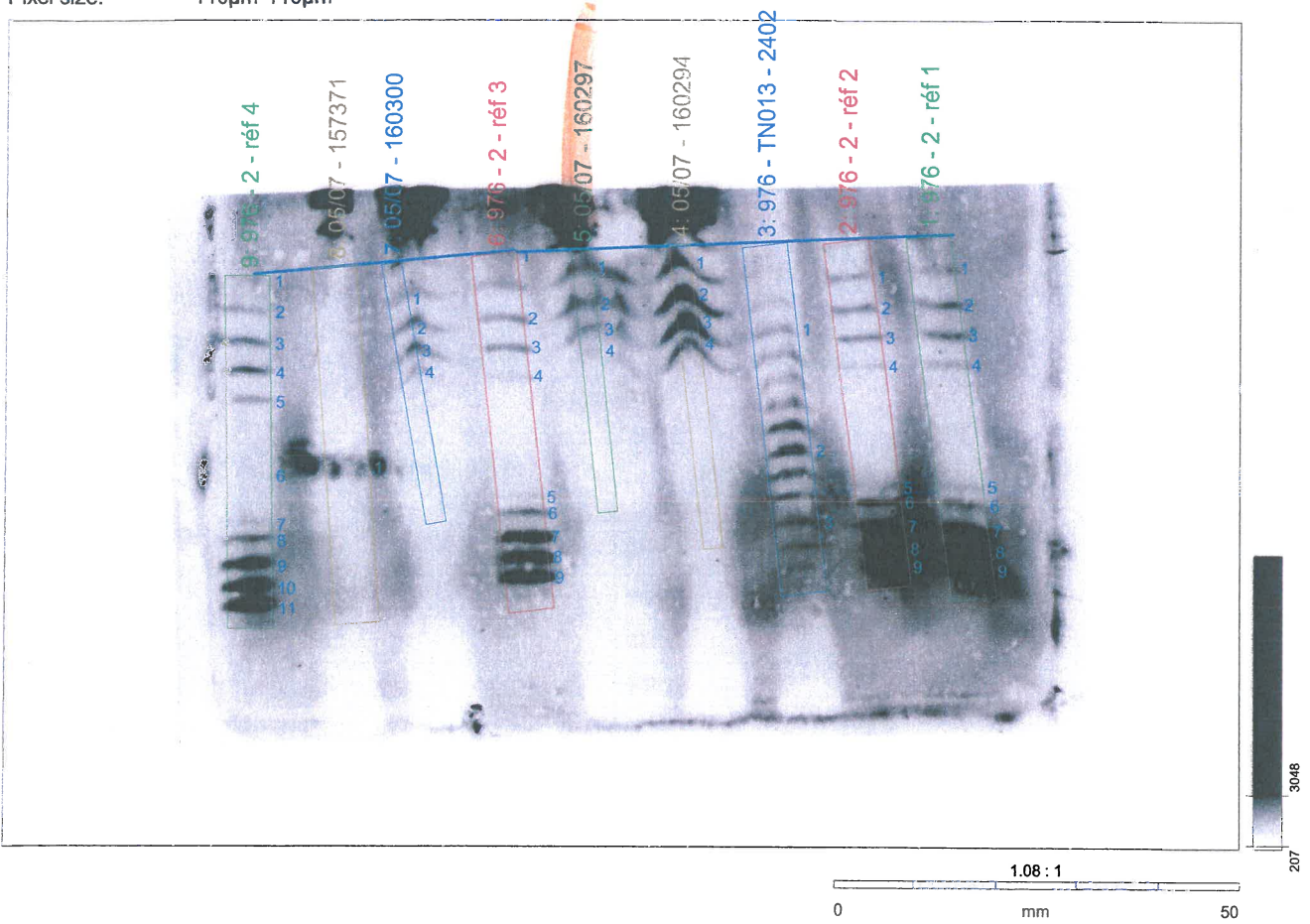
Chromatogrammes et images des gels IEF

Parameter

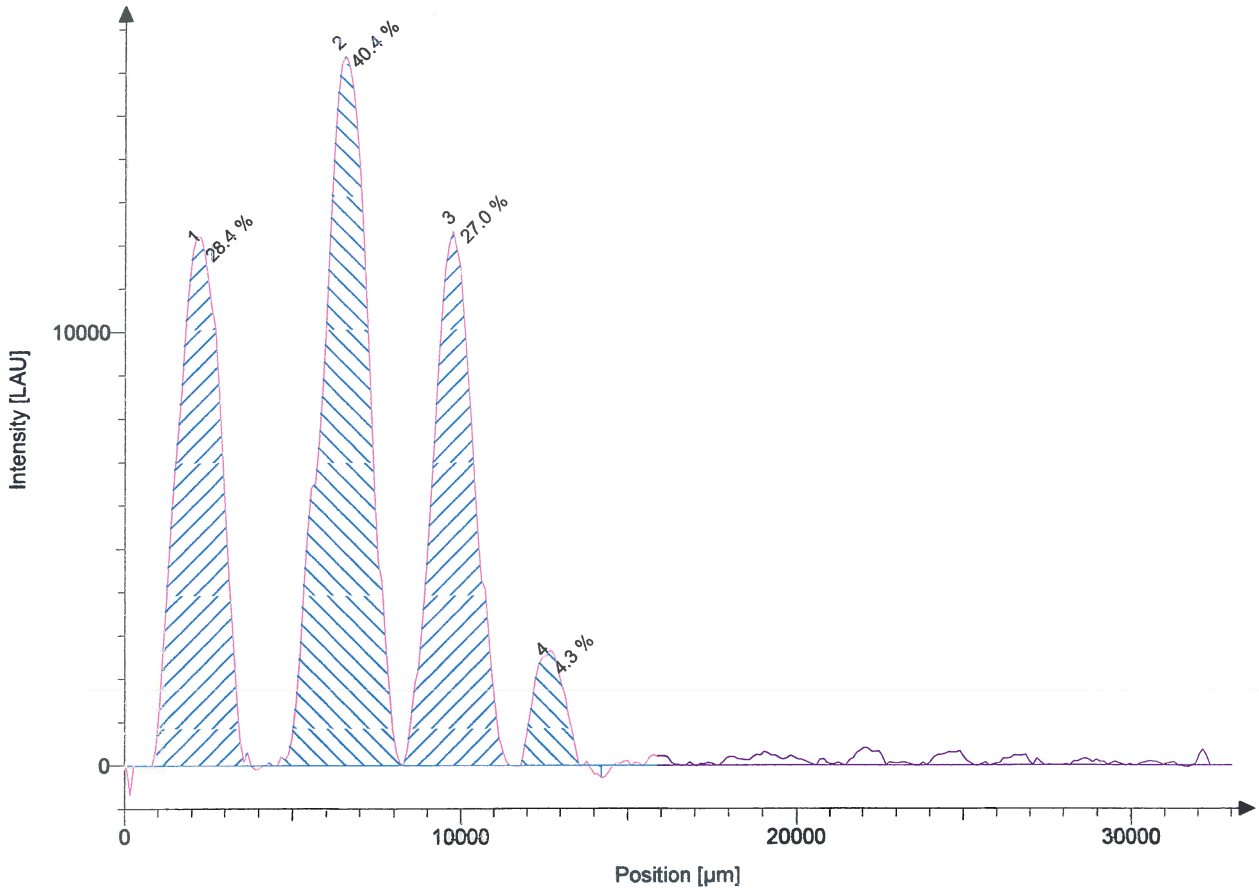
Parameter file: \\Camera1\c sur camera1\Camera1\EPO Intégration 661-\Intégration 900-999\976 2H.inf
Image data file: \\Camera1\c sur camera1\Camera1\EPO Intégration 661-\Intégration 900-999\976 2H.img
Original file: EPO 976 2H 1min30
Scan date: Tuesday, March 01, 2005, 10:08:45 AM

Camera: Fuji LAS-1000plus
Exposure time: 30 sec
Repeat times: 3
Sample position: 2
Image corrections: Dark-Frame, Spotting
Lens: URF20L, Iris=0.85
CCD Temperature: Cooling on, Status=READY, T=-30.0

Digital resolution: 16384, 14 bit per pixel
Image size: 1384*922, 152.24mm*101.42mm
Pixel size: 110µm*110µm



Profile: 05/07 - 160297



Peak	Height [LAU]	Integral-Bkg [%]
1	12219	28.4
2	16389	40.4
3	12340	27.0
4	2664	4.3
Sum	-	100.0

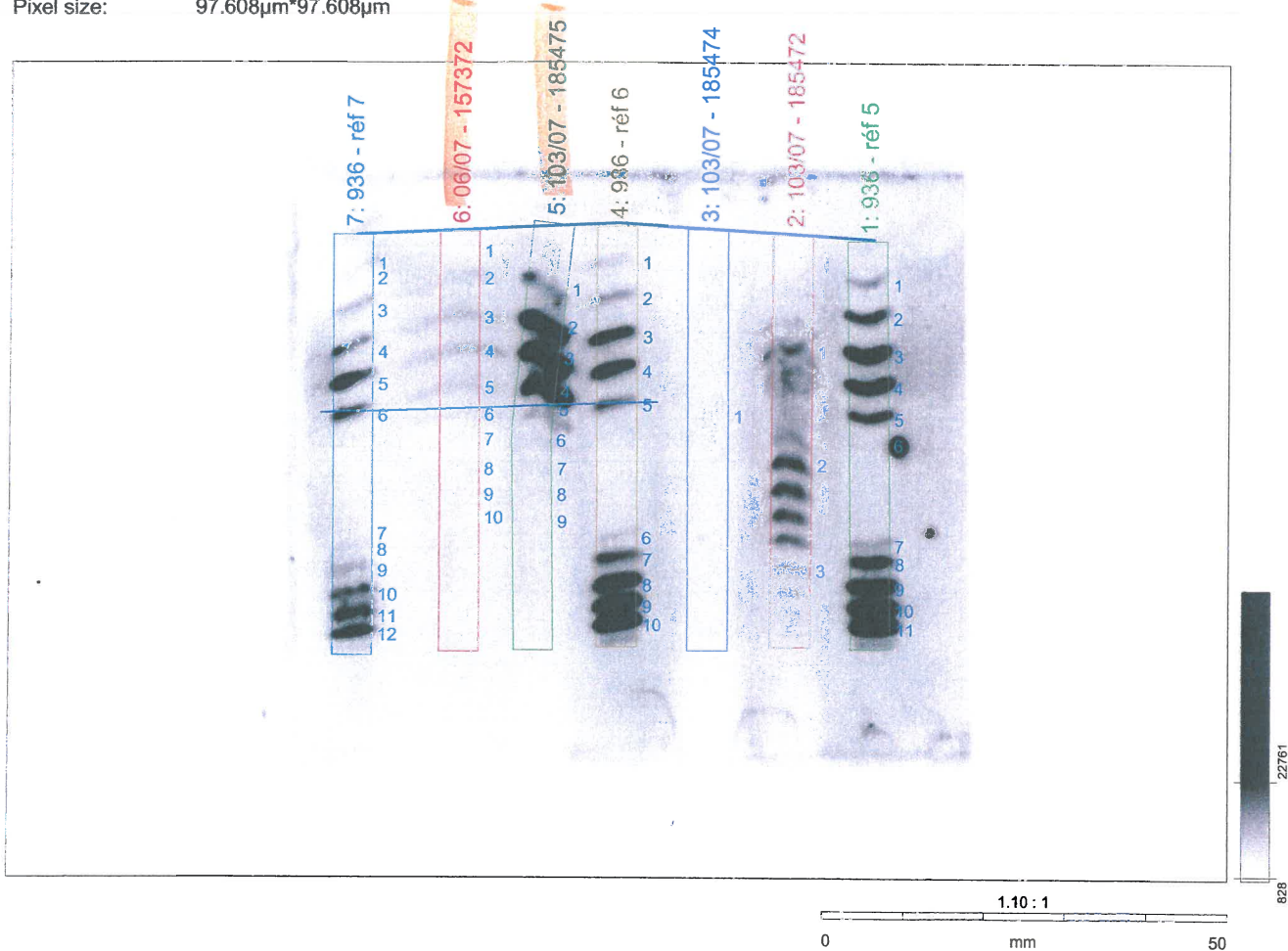
4
3
2
1

Parameter

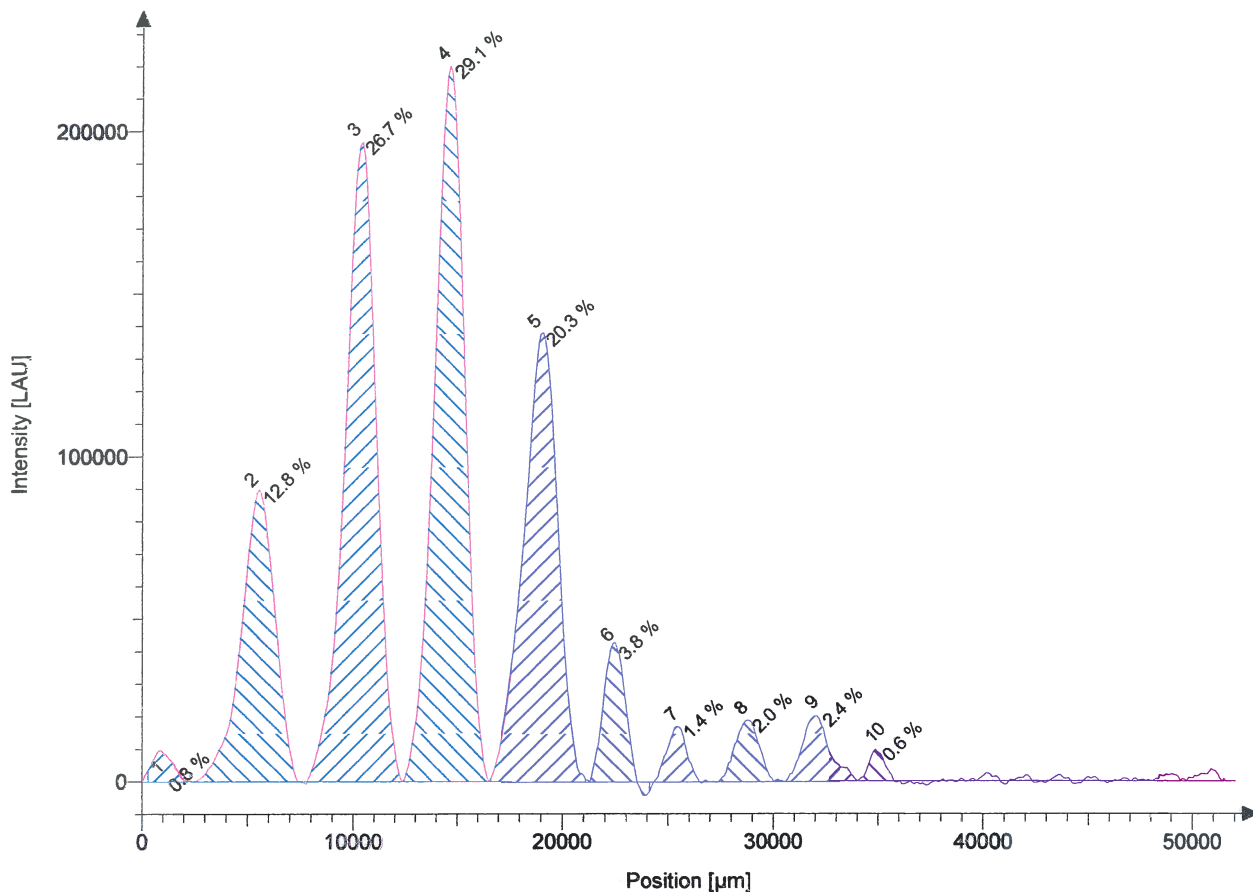
Parameter file: \\Camera1\c sur camera1\Camera1\EPO Intégration 661-Intégration 900-999\936 B.inf
Image data file: \\Camera1\c sur camera1\Camera1\EPO Intégration 661-Intégration 900-999\936 B.img
Original file: EPO 936 B 40 sec
Scan date: Wednesday, November 10, 2004, 10:05:14 AM
Scan operator: 9472273

Camera: Fuji LAS-3000
Exposure time: 10sec
Repeat times: 4
Sample position: 2 STD
Binning: H2
Dark-Frame: YES, 1024
Flat-Frame: FUJI_chemilumi_2.chd
Spotting: YES
Invert pixels: NO
Lens: VRF43LMD, Iris=0.85
CCD Temperature: Cooling on, Status=READY, T=-30.1
Light: NONE
Filter: 1 Through

Digital resolution: 65536, 16 bit per pixel
Image size: 1536*1024, 149.93mm*99.95mm
Pixel size: 97.608µm*97.608µm



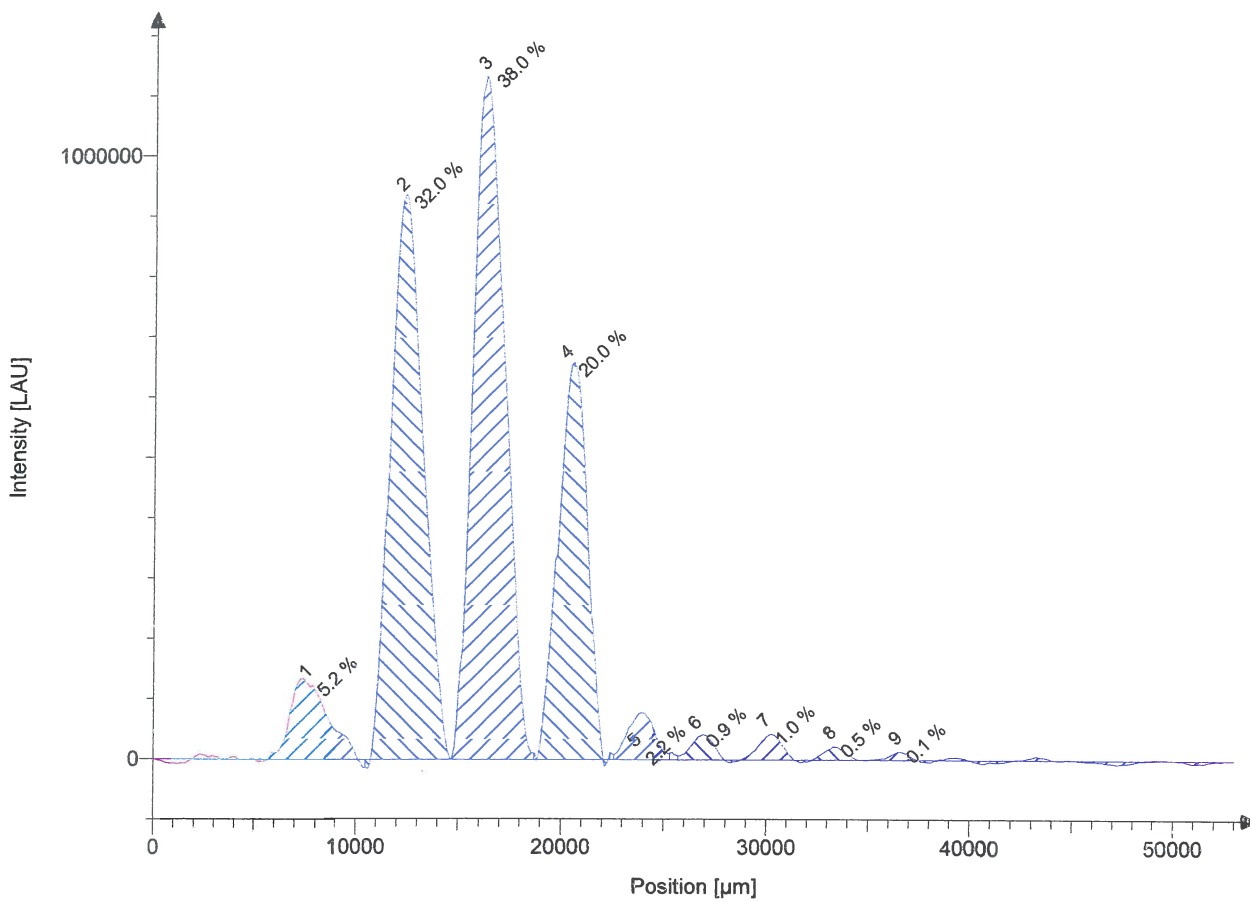
Profile: 06/07 - 157372



Peak	Height [LAU]	Integral-Bkg [%]
1	9446	0.8
2	89843	12.8
3	196689	26.7
4	220110	29.1
5	137890	20.3
6	42809	3.8
7	17170	1.4
8	18865	2.0
9	20206	2.4
10	9648	0.6
Sum	--	100.0

5
4
3
2
1
α
B
S
E

Profile: 103/07 - 185475



Peak	Height [LAU]	Integral-Bkg [%]
1	133857	5.2
2	936935	32.0
3	1133092	38.0
4	658856	20.0
5	77732	2.2
6	41395	0.9
7	42313	1.0
8	21771	0.5
9	13572	0.1
Sum	--	100.0

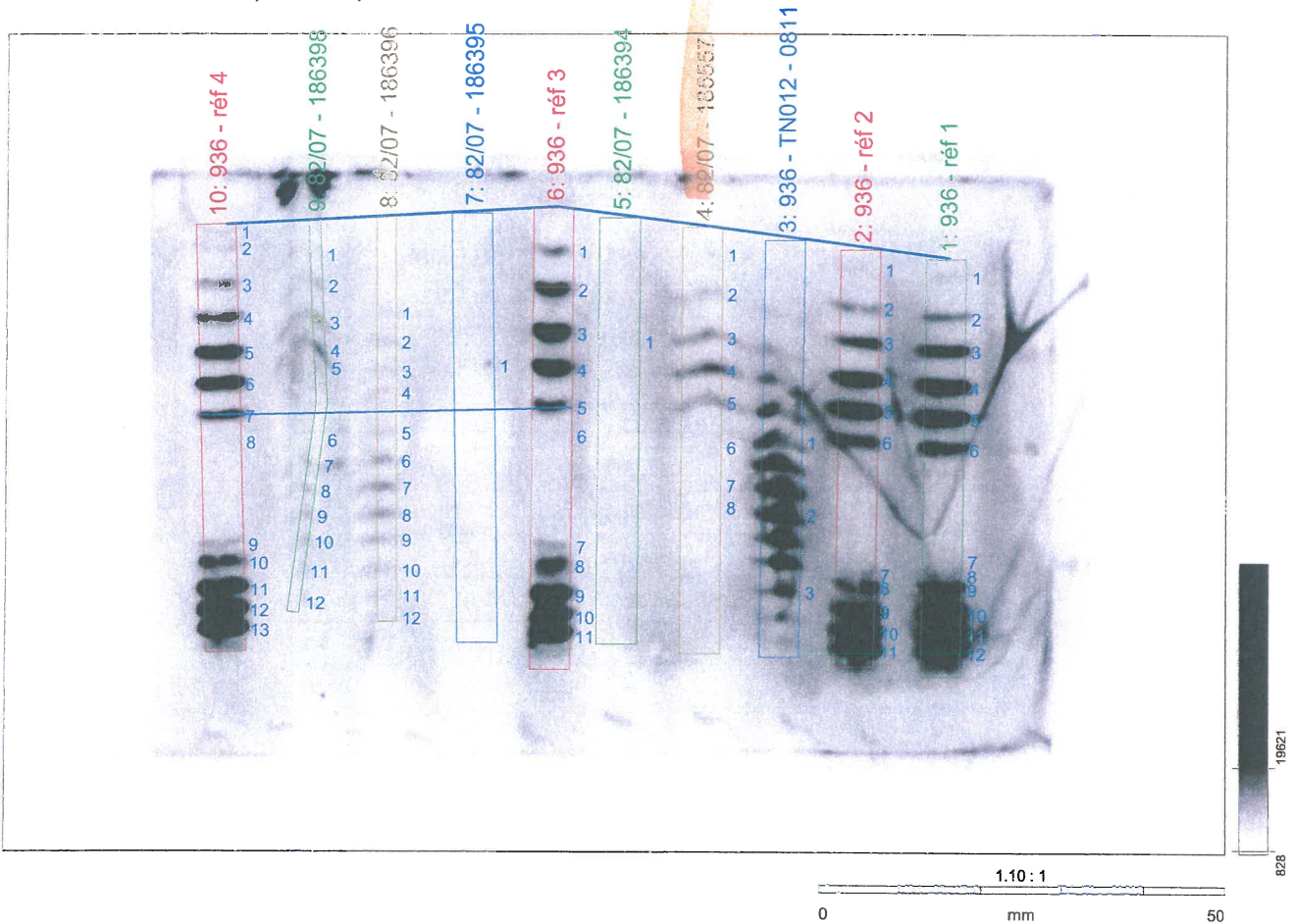
4
3
2
1
α
β
γ
δ
ε

Parameter

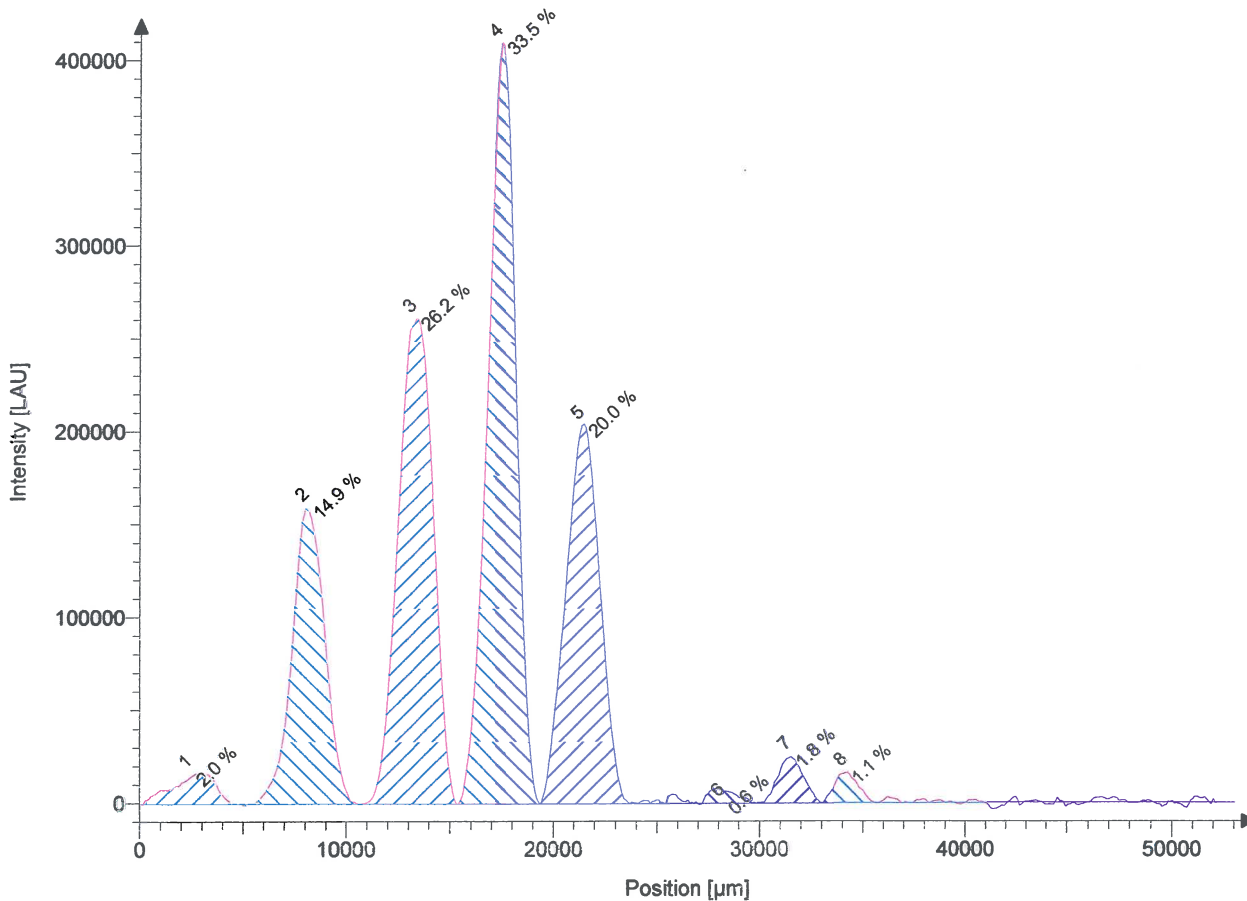
Parameter file: \\Camera1\c sur camera1\Camera1\EPO Intégration 661-\Intégration 900-999\936 H.inf
Image data file: \\Camera1\c sur camera1\Camera1\EPO Intégration 661-\Intégration 900-999\936 H.img
Original file: EPO 936 H 30 sec
Scan date: Wednesday, November 10, 2004, 9:54:27 AM
Scan operator: 9472273

Camera: Fuji LAS-3000
Exposure time: 10sec
Repeat times: 3
Sample position: 2 STD
Binning: H2
Dark-Frame: YES, 1024
Flat-Frame: FUJI_chemilumi_2.chd
Spotting: YES
Invert pixels: NO
Lens: VRF43LMD, Iris=0.85
CCD Temperature: Cooling on, Status=READY, T=-30.1
Light: NONE
Filter: 1 Through

Digital resolution: 65536, 16 bit per pixel
Image size: 1536*1024, 149.93mm*99.95mm
Pixel size: 97.608µm*97.608µm



Profile: 82/07 - 185557



Peak	Height [LAU]	Integral-Bkg [%]
1	16626	2.0
2	159225	14.9
3	260833	26.2
4	409226	33.5
5	204251	20.0
6	8087	0.6
7	24726	1.8
8	16393	1.1
Sum	--	100.0

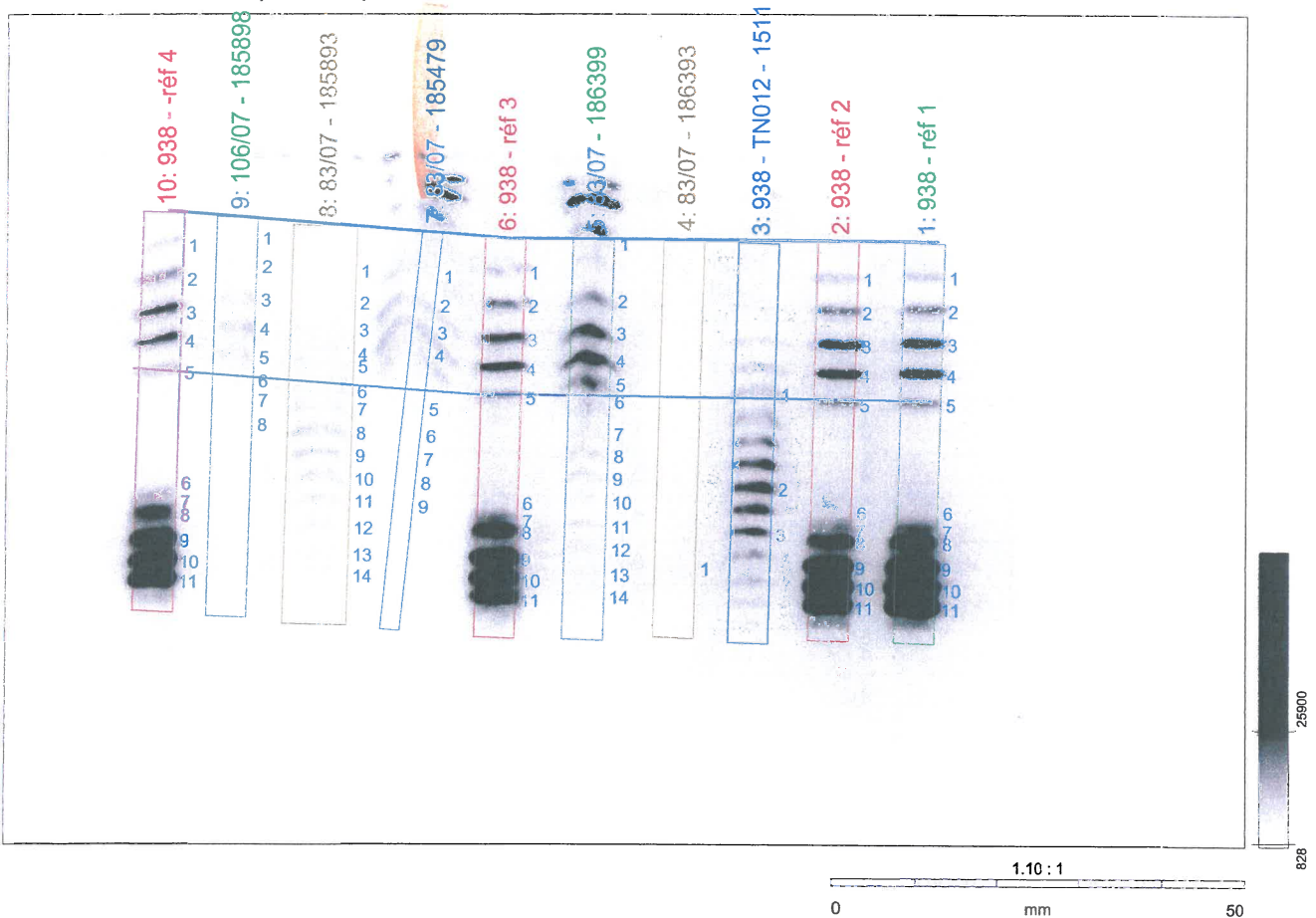
5
4
3
2
1
B
8
5

Parameter

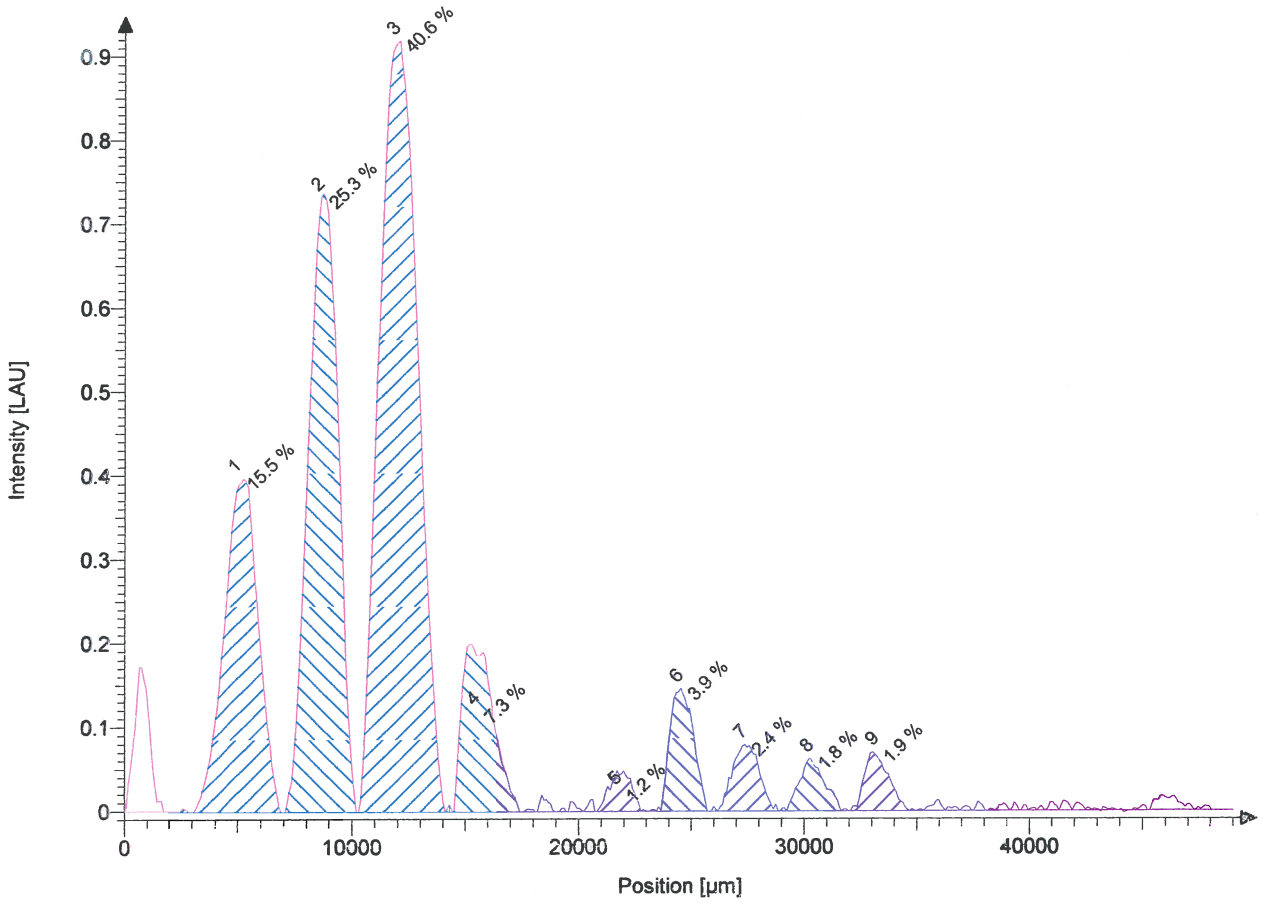
Parameter file: \\Camera1\c sur camera1\Camera1\EPO Intégration 661-\Intégration 900-999\938 1H.inf
Image data file: \\Camera1\c sur camera1\Camera1\EPO Intégration 661-\Intégration 900-999\938 1H.img
Original file: EPO 938 1H 20 sec
Scan date: Wednesday, November 17, 2004, 10:22:03 AM
Scan operator: 9472273

Camera: Fuji LAS-3000
Exposure time: 10sec
Repeat times: 2
Sample position: 2 STD
Binning: H2
Dark-Frame: YES, 1024
Flat-Frame: NO
Spotting: YES
Invert pixels: NO
Lens: VRF43LMD, Iris=0.85
CCD Temperature: Cooling on, Status=READY, T=-30.1
Light: NONE
Filter: 1 Through

Digital resolution: 65536, 16 bit per pixel
Image size: 1536*1024, 149.93mm*99.95mm
Pixel size: 97.608µm*97.608µm



Profile: 83/07 - 185479



Peak	Height [LAU]	Integral-Bkg [%]
1	0	15.5
2	1	25.3
3	1	40.6
4	0	7.3
5	0	1.2
6	0	3.9
7	0	2.4
8	0	1.8
9	0	1.9
Sum	--	100.0

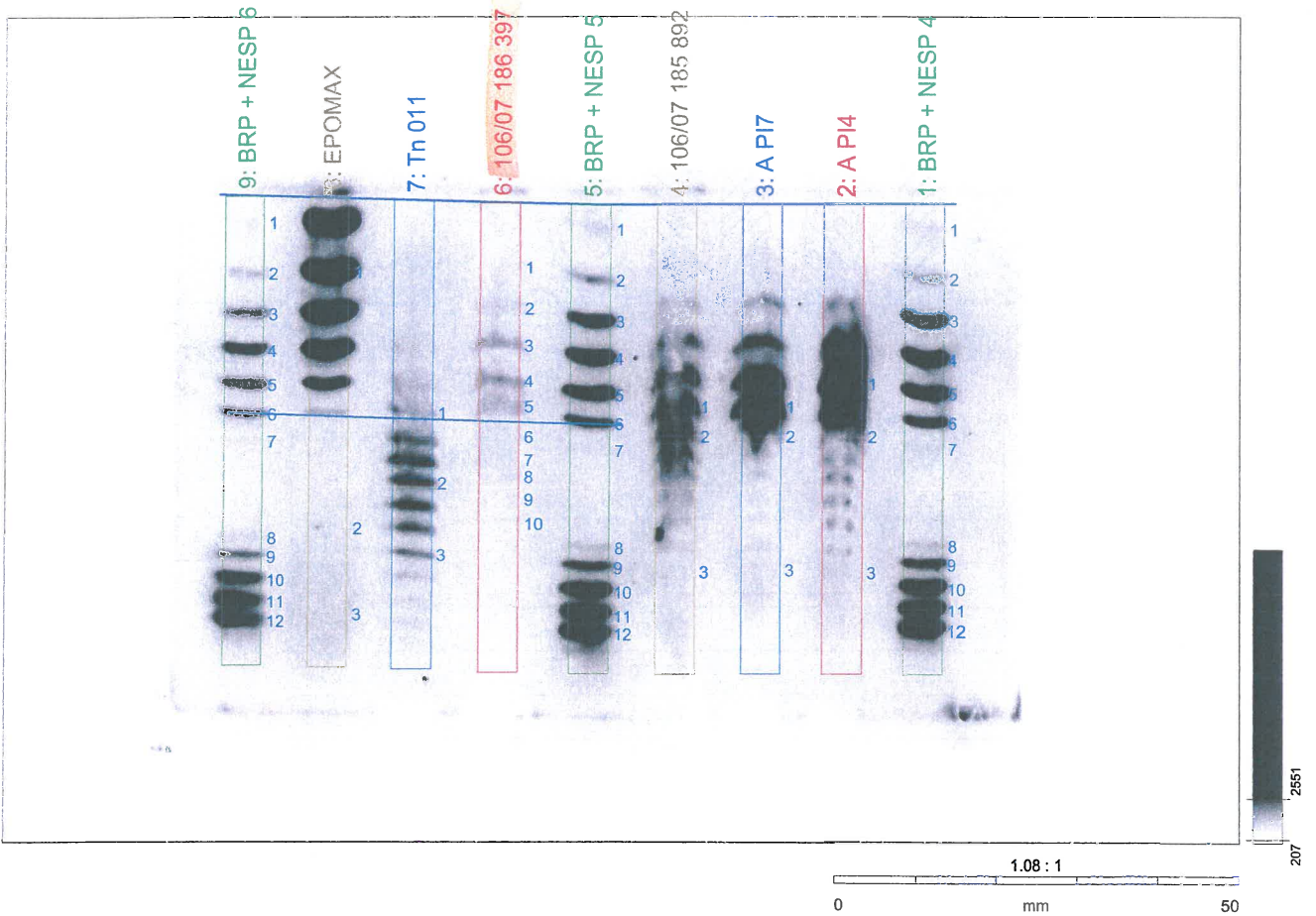
4
3
2
1
2
P
2
S
E

Parameter

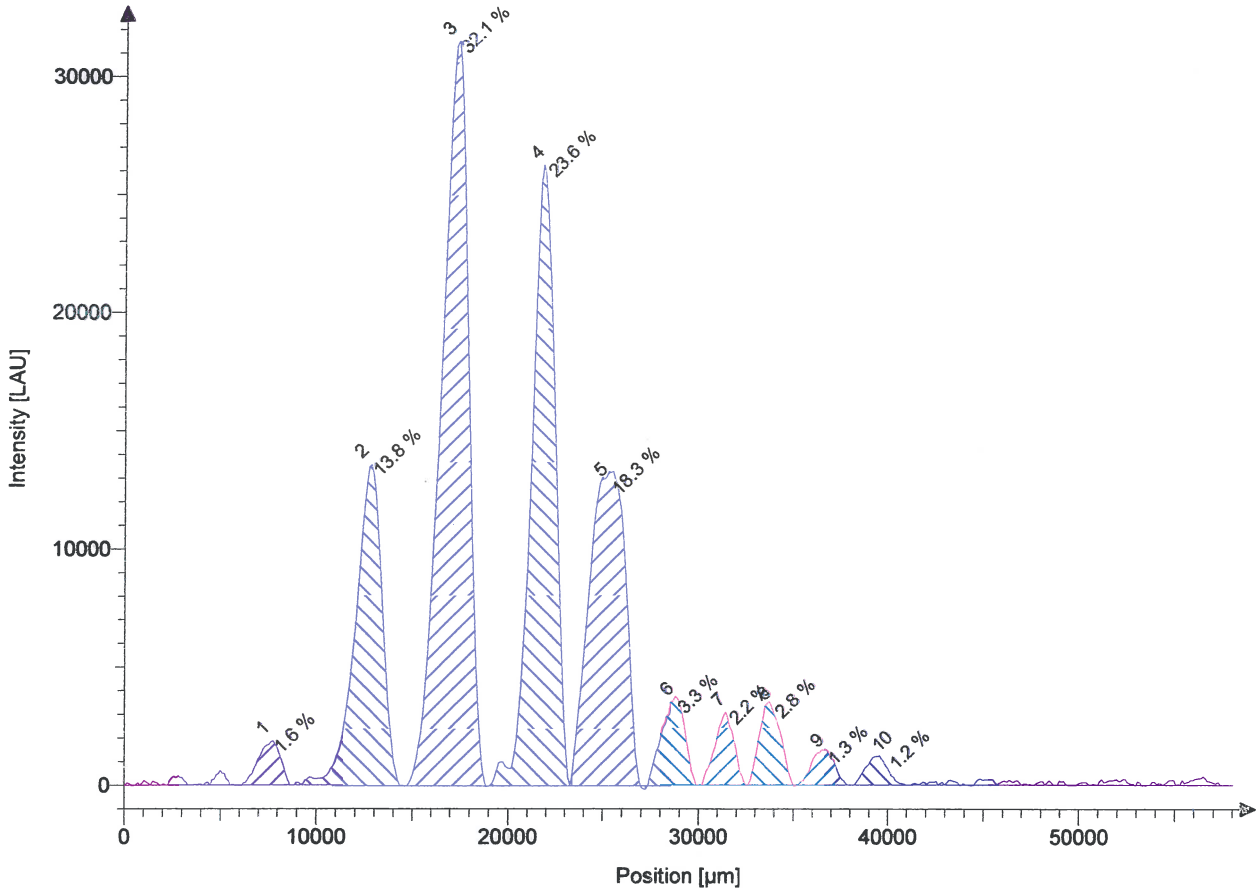
Parameter file: \\Camera1\c sur camera1\Camera1\Images Fuji\Images 2004\Images Février 2004\EPO 851 B 1min30.inf
Image data file: \\Camera1\c sur camera1\Camera1\Images Fuji\Images 2004\Images Février 2004\EPO 851 B 1min30.img
Original file: EPO 851 B 1min30
Scan date: Thursday, February 19, 2004, 10:45:41 AM

Camera: Fuji LAS-1000plus
Exposure time: 30 sec
Repeat times: 3
Sample position: 2
Image corrections: Dark-Frame, Spotting
Lens: URF20L, Iris=0.85
CCD Temperature: Cooling on, Status=READY, T=-30.0

Digital resolution: 16384, 14 bit per pixel
Image size: 1384*922, 152.24mm*101.42mm
Pixel size: 110µm*110µm



Profile: 106/07 186 397



Peak	Height [LAU]	Integral-Bkg [%]
1	1865	1.6
2	13564	13.8
3	31458	32.1
4	26199	23.6
5	13265	18.3
6	3746	3.3
7	3069	2.2
8	3517	2.8
9	1521	1.3
10	1225	1.2
Sum	--	100.0

5
4
3
2
1
2
B
2
S
C

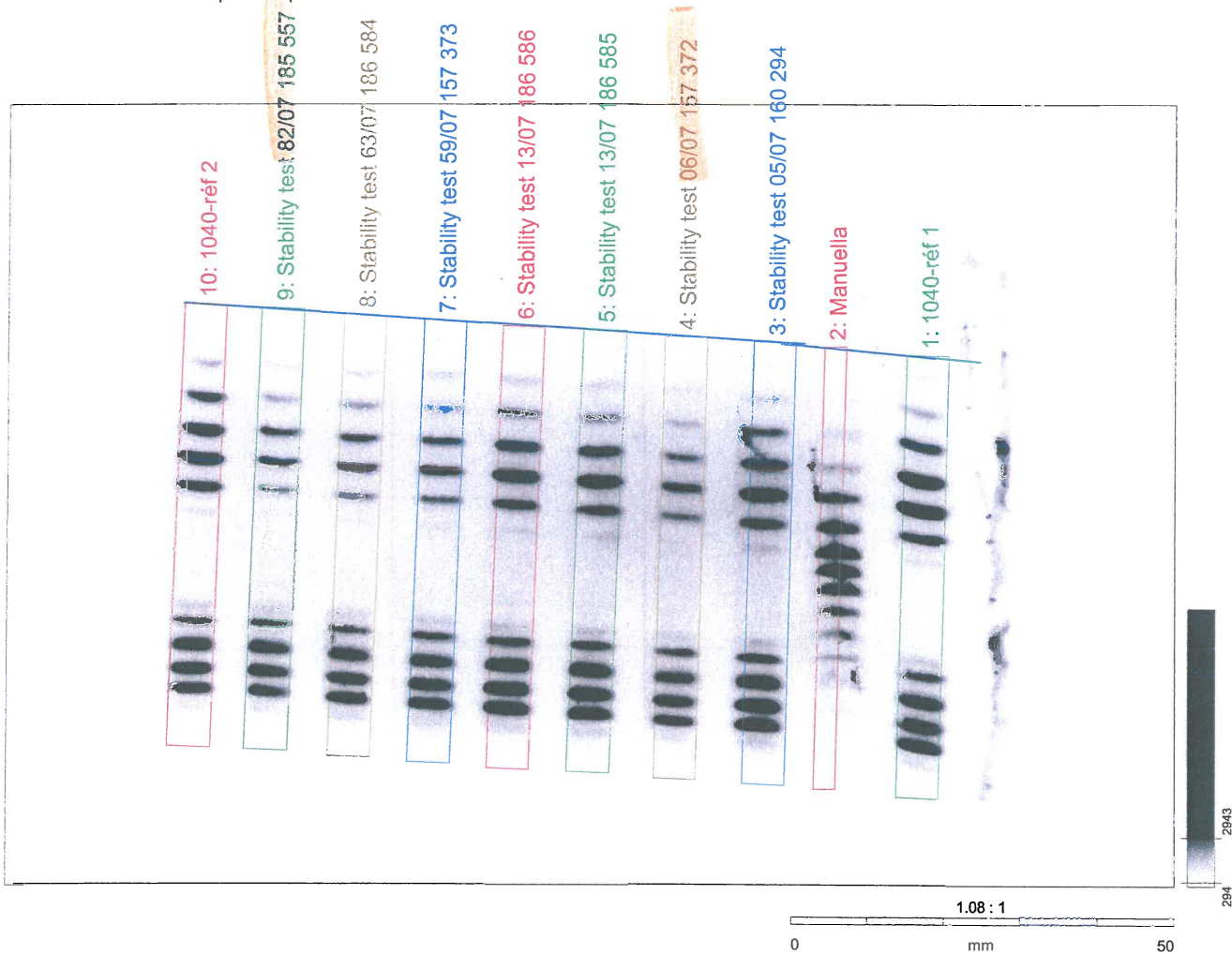
Test de stabilité

Parameter

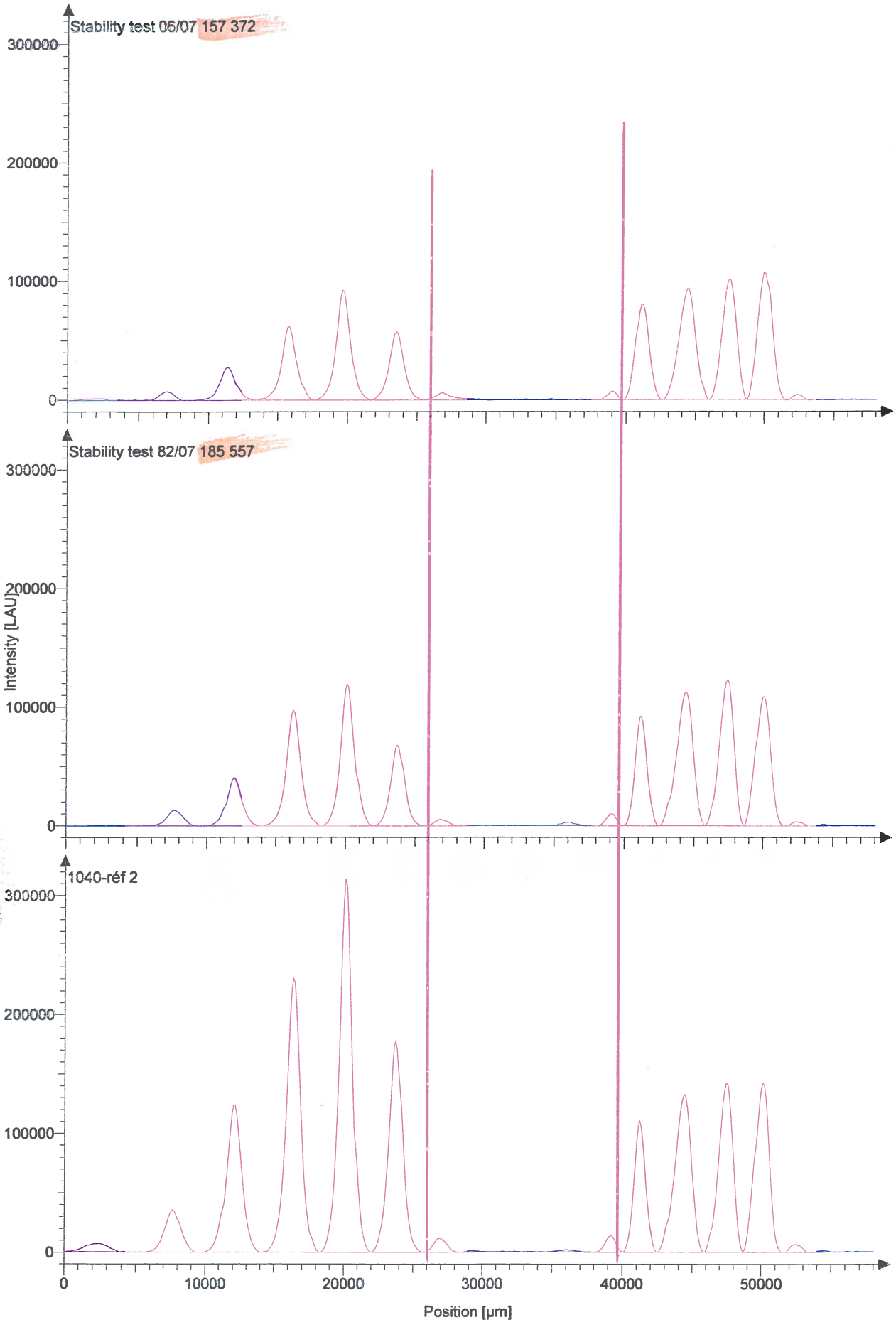
Parameter file: \\Camera1\c sur camera1\Camera1\Images Fuji\Images 2005\Images Septembre 2005\EPO 1040 H 1min.inf
Image data file: \\Camera1\c sur camera1\Camera1\Images Fuji\Images 2005\Images Septembre 2005\EPO 1040 H 1min.img
Original file: EPO 1040 H 1min
Scan date: Tuesday, September 06, 2005, 9:43:47 AM

Camera: Fuji LAS-1000plus
Exposure time: 30 sec
Repeat times: 2
Sample position: 2
Image corrections: Dark-Frame, Spotting
Lens: URF20L, Iris=0.85
CCD Temperature: Cooling on, Status=READY, T=-30.0

Digital resolution: 16384, 14 bit per pixel
Image size: 1384*922, 152.24mm*101.42mm
Pixel size: 110µm*110µm



Profile: 1040-réf 2

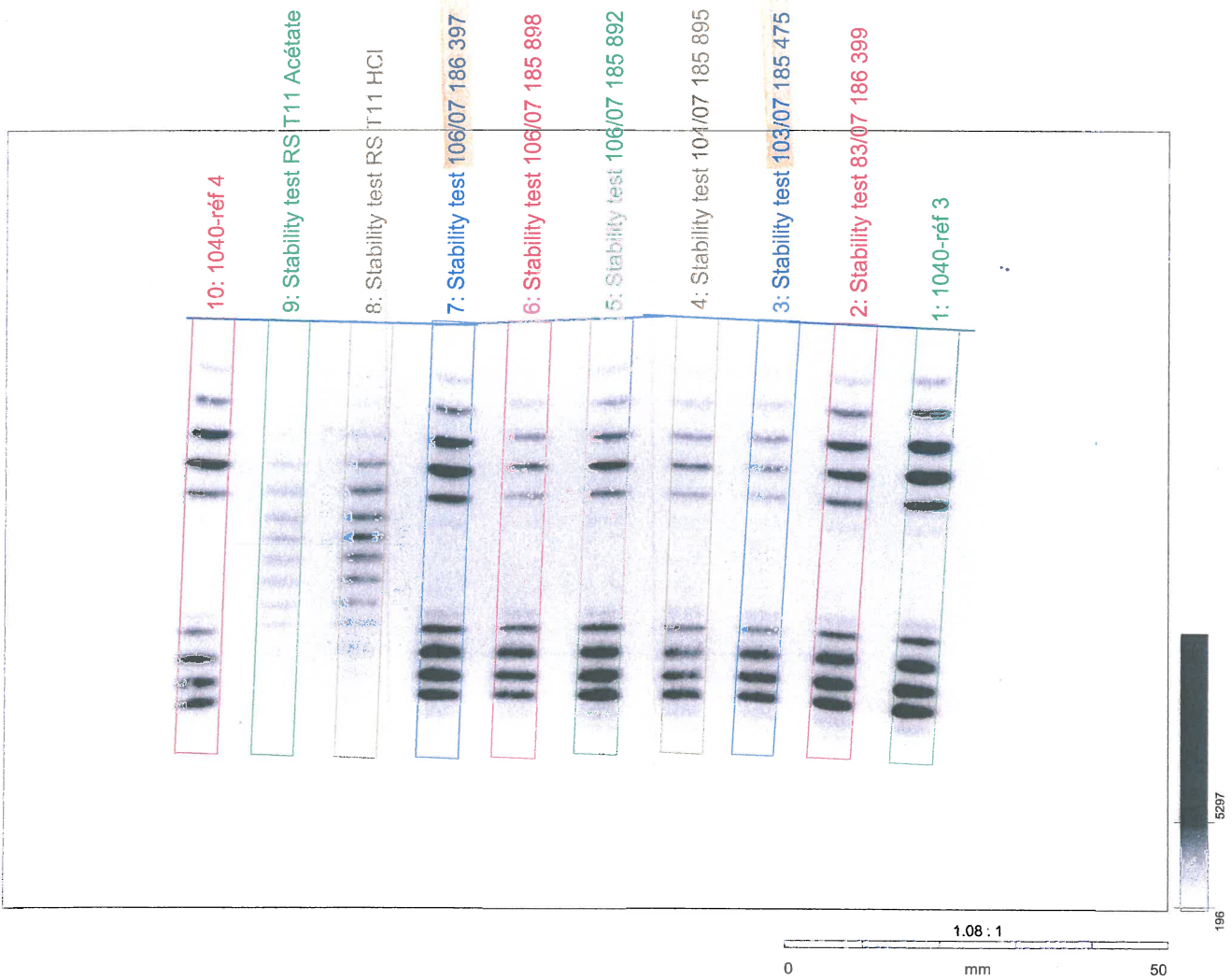


Parameter

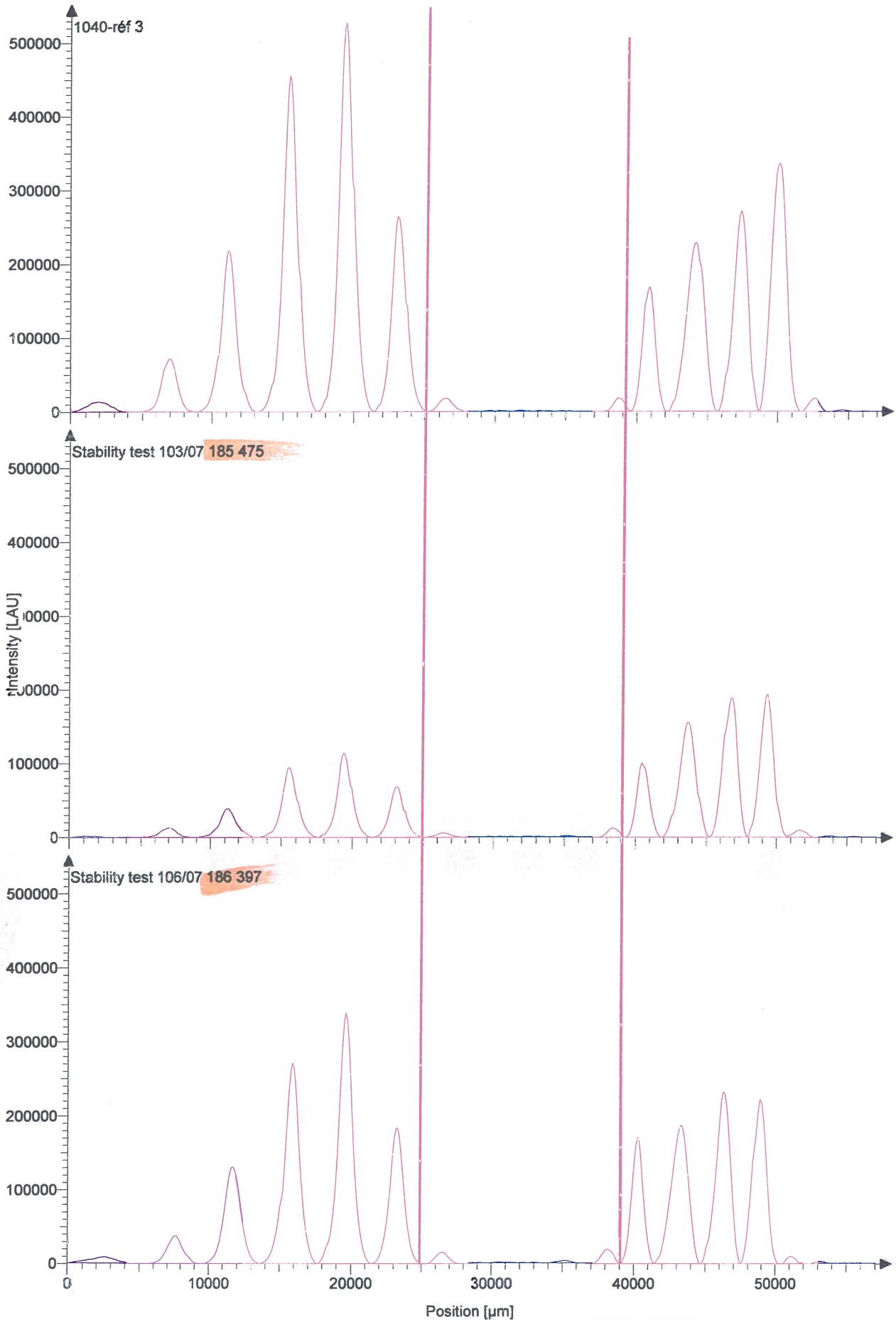
Parameter file: \\Camera1\c sur camera1\Camera1\Images Fuji\Images 2005\Images Septembre 2005\EPO 1040 B 1min30.inf
Image data file: \\Camera1\c sur camera1\Camera1\Images Fuji\Images 2005\Images Septembre 2005\EPO 1040 B 1min30.img
Original file: EPO 1040 B 1min30
Scan date: Tuesday, September 06, 2005, 9:54:20 AM

Camera: Fuji LAS-1000plus
Exposure time: 30 sec
Repeat times: 3
Sample position: 2
Image corrections: Dark-Frame, Spotting
Lens: URF20L, Iris=0.85
CCD Temperature: Cooling on, Status=READY, T=-30.0

Digital resolution: 16384, 14 bit per pixel
Image size: 1384*922, 152.24mm*101.42mm
Pixel size: 110µm*110µm



Profile: Stability test 106/07 186 397

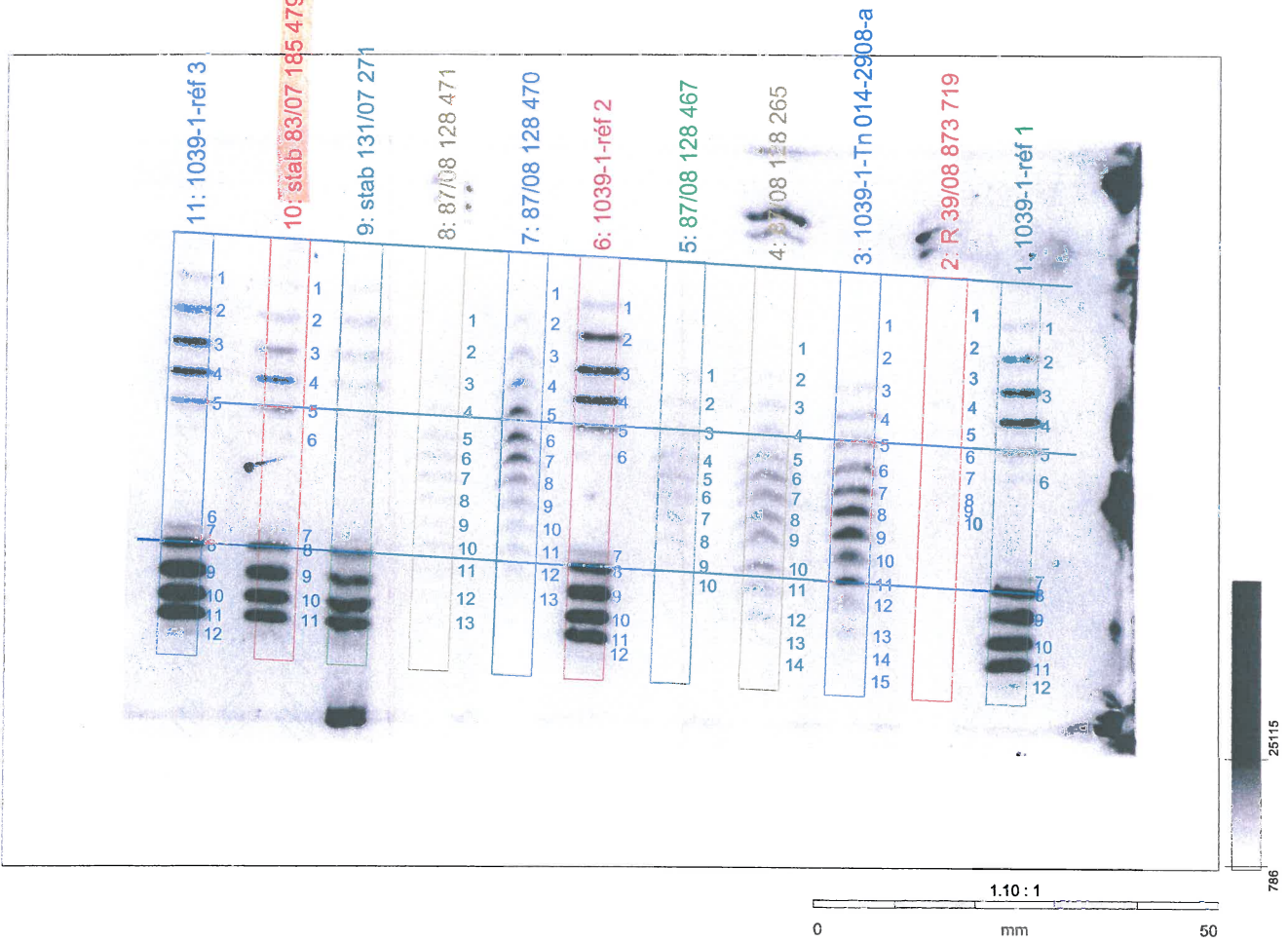


Parameter

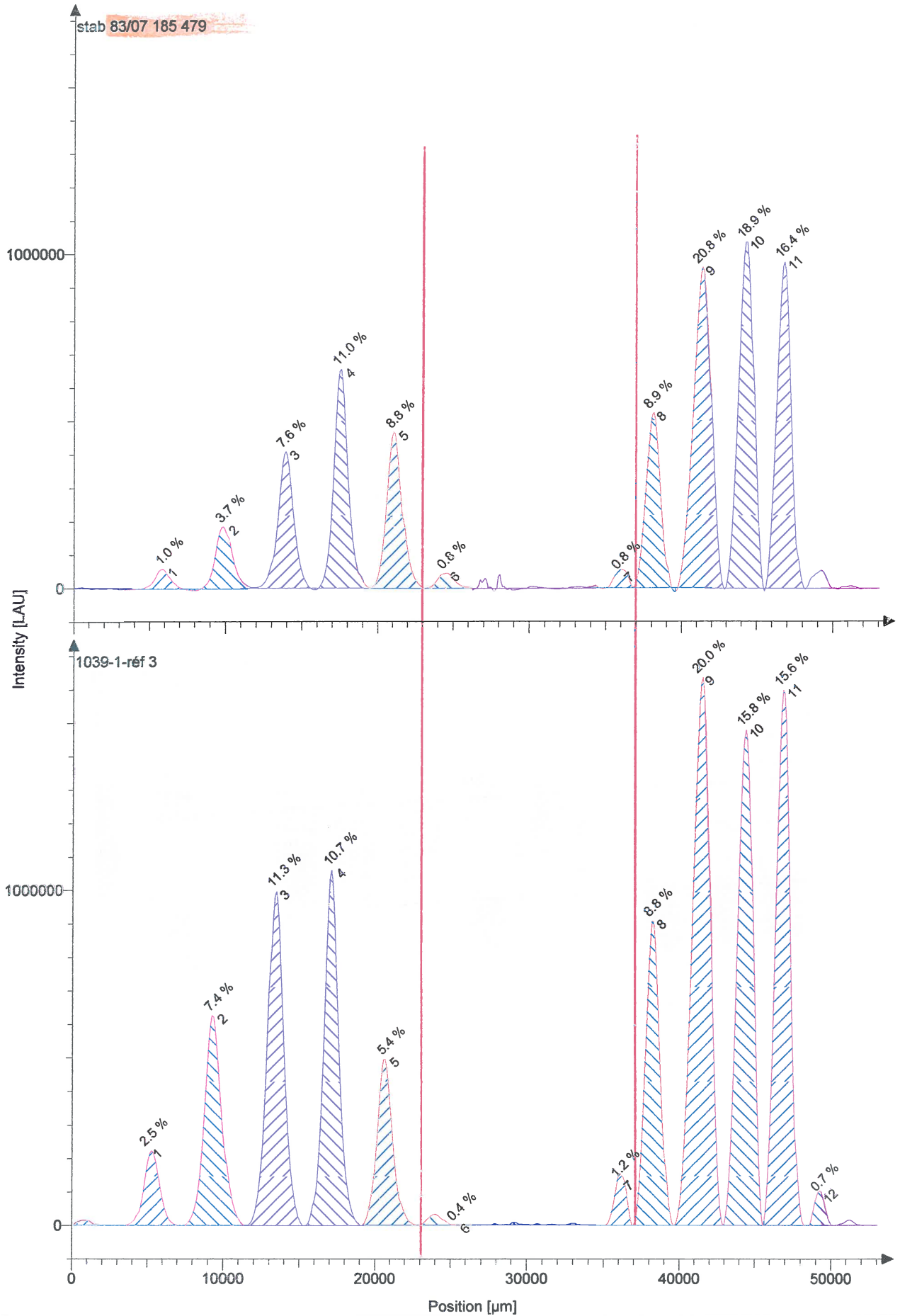
Parameter file: \\Camera1\c sur camera1\Camera1\Images Fuji\Images 2005\Images Août 2005\EPO 1039 1H 2min.inf
Image data file: \\Camera1\c sur camera1\Camera1\Images Fuji\Images 2005\Images Août 2005\EPO 1039 1H 2min.img
Original file: EPO 1039 1H 2min
Scan date: Wednesday, August 31, 2005, 9:25:20 AM
Scan operator: 3632150

Camera: Fuji LAS-3000
Exposure time: 15sec
Repeat times: 8
Sample position: 2 STD
Binning: H2
Dark-Frame: YES, 1024
Flat-Frame: FUJI_chemilumi_2.chd
Spotting: YES
Invert pixels: NO
Lens: VRF43LMD, Iris=0.85
CCD Temperature: Cooling on, Status=READY, T=-30.0
Light: NONE
Filter: 1 Through

Digital resolution: 65536, 16 bit per pixel
Image size: 1536*1024, 149.93mm*99.95mm
Pixel size: 97.608µm*97.608µm



Profile: 1039-1-réf 3



Analyse discriminante

Résultats de l'analyse mathématique sur les échantillons du Tour de France
 1999

EPO bands file name ? TdF99.txt
 Display profile labels on graph (y/n) ? n
 Display profile curves window (y/n) ? n

 EPO bands file : TdF99.txt
 Number of rows and columns : 37 16

 Number of unclassifiable samples (+) : 3

Echantillon	Prob(+)	Prob(-)
185553	0.9970	0.003010
186587	0.9980	0.001997
185896	0.9898	0.010170

 Number of unclassifiable samples (-) : 2

Echantillon	Prob(+)	Prob(-)
186589	0.4637031	0.5363
186358	0.0006193	0.9994

 Number of positive samples : 15

Echantillon	Prob(+)	Prob(-)
157371	1	2.719e-06
160294	1	5.432e-11
160297	1	5.671e-10
160300	1	1.507e-05
157372	1	1.682e-09
186585	1	2.165e-16
186586	1	9.524e-09
157373	1	4.706e-11
185557	1	8.657e-11
185479	1	2.671e-15
186399	1	1.650e-10
185475	1	8.642e-15
185898	1	1.613e-12
186397	1	1.441e-07
185555	1	1.750e-06

Number of negative samples : 17

<u>Echantillon</u>	<u>Prob(+)</u>	<u>Prob(-)</u>
185558	8.082e-06	1
186581	3.575e-22	1
186582	6.337e-05	1
160292	5.457e-07	1
186590	5.082e-08	1
186076	1.536e-20	1
186077	1.302e-05	1
186071	2.451e-08	1
186073	1.655e-22	1
160296	2.153e-17	1
160291	5.364e-06	1
157376	1.103e-10	1
186396	2.267e-14	1
185893	3.072e-09	1
185478	3.401e-11	1
185884	4.388e-10	1
185900	8.929e-11	1